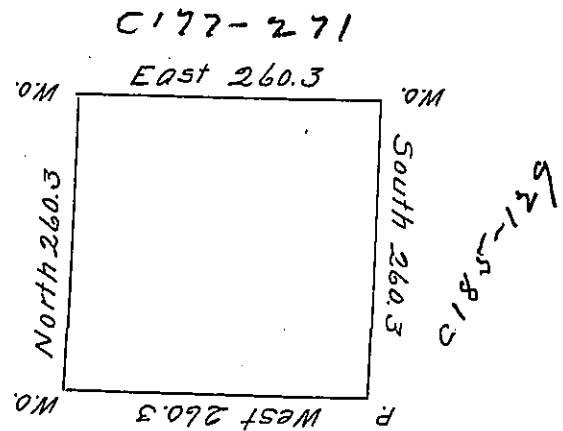


81.

Elizabeth Roberdeans



The above is the draught of a survey made December 19th 1794 in
 pursuance of a Warrant granted to Kitty Doughty on the 14th day
 of April 1792 Situate Northwest of the Ohio River on the Waters
 of Beaver Creek adjoining land granted to Elizabeth Roberdean
 Called Dixmunde containing 400 Acres with the usual allowance
 of 6 p Cent & c.

Jn^o Hoge D.S.

Daniel Brodhead Esq. S. G.

IN TESTIMONY that the above is a copy of the original remaining on file in
 the Department of Internal Affairs of Pennsylvania, made
 conformably to an Act of Assembly approved the 16th day of
 February, 1833, I have hereunto set my Hand and caused
 the Seal of said Department to be affixed at Harrisburg,
 this ninth day of June 1904.

James P. Brown
 Secretary of Internal Affairs.